



Step by Step

**How To**

# **Deactivate a Vehicle**

*This How To article explains how to deactivate a vehicle*

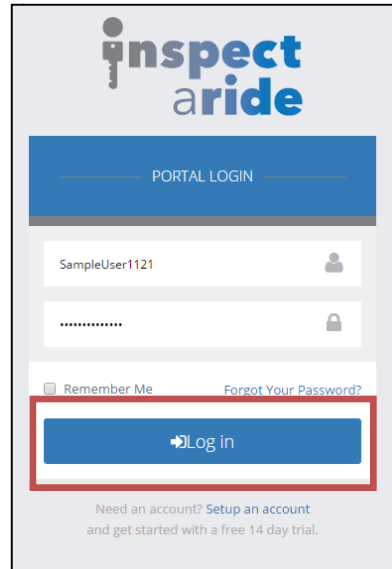
For a complete list of available How To documents visit the Support section of our website: [www.inspectaride.com/support/](http://www.inspectaride.com/support/)

# HOW TO: DEACTIVATE A VEHICLE

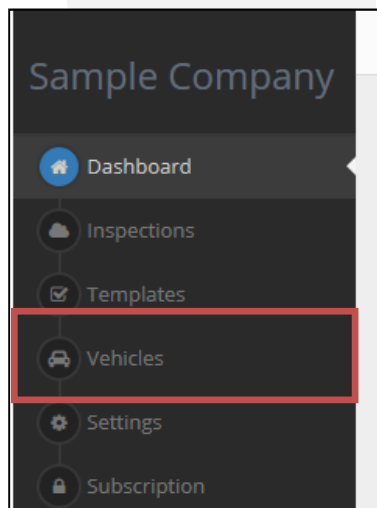
---

**If you have setup a vehicle that you no longer need you can easily deactivate it.**

1. The first step is to login to the InspectARide portal. This is done by entering your username and password here: <https://www.inspectaride.com/login>



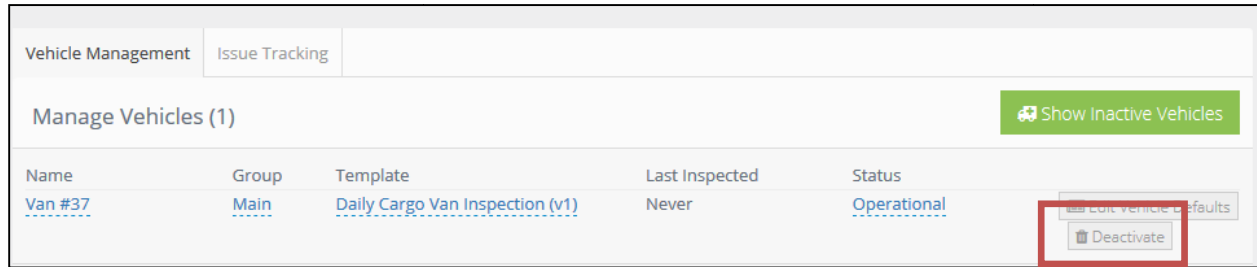
2. Once logged in, go to the 'Vehicles' section on the left hand side.



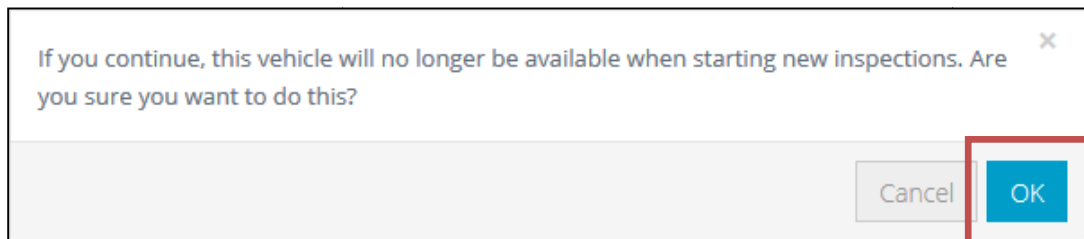
## How To: DEACTIVATE A VEHICLE

---

- Here we can see a list of the vehicles we've already setup. To deactivate a vehicle simply tap the 'Deactivate' button to the left of it.



- A message will pop up asking for confirmation to deactivate. Tap 'OK' to complete the deactivation.



- The vehicle will now be deactivated.