



Step by Step

How To

Restore a Backup

This How To article explains how to restore a backup

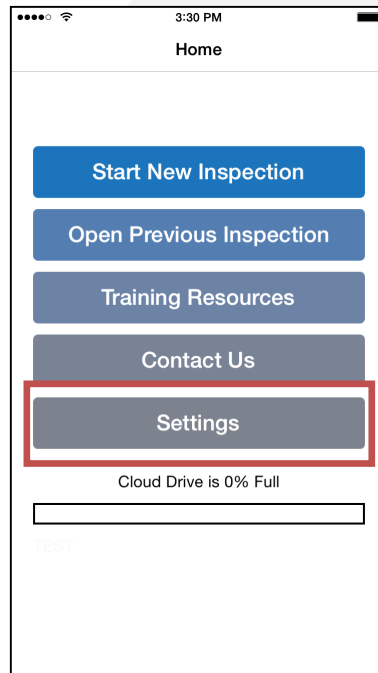
For a complete list of available How To documents visit the Support section of our website: www.inspectaride.com/support/

HOW TO: RESTORE A BACKUP

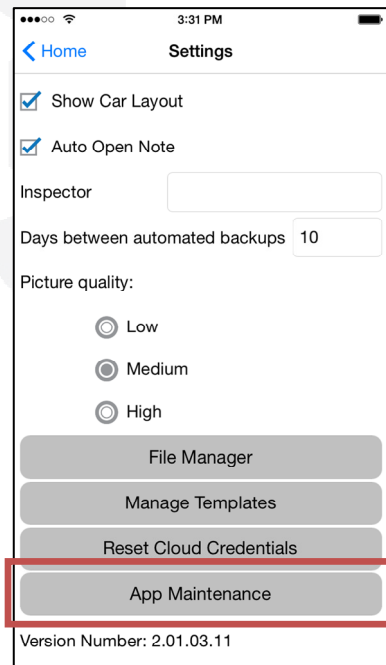
The InspectARide app will automatically create backups on the data on your device. You can also manually create a backup at any point in time within the app. If you find that you want to restore a backup this is very simple to do on the app and below are the steps for doing this.

Restoring the Backup

1. First, open the InspectARide app and tap on the 'Settings' button on the home screen.

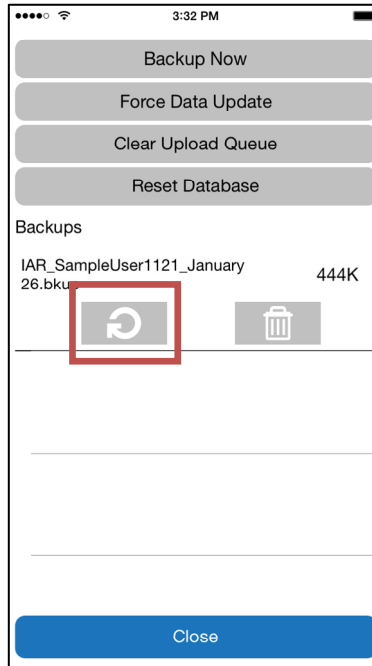


2. Next, tap on 'App Maintenance'.



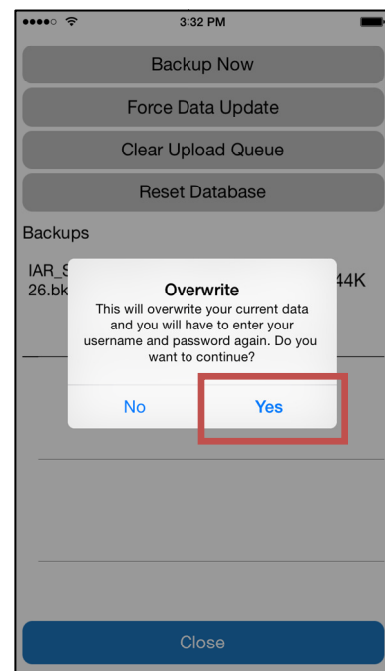
HOW TO: RESTORE A BACKUP

- Here we can see a list of all the backups that are on this device. To restore one, simply tap on the 'Restore' icon for the backup you want to restore.



- A message will appear letting you know that this will overwrite the existing data on this device and that you will need to enter your username/password again after this process is complete. Tap on 'Yes' to continue.

NOTE: You may need to log in to the portal to remove a device install after the backup is restored so that you can connect to the cloud again. If you are not sure how to do this contact InspectARide (support@inspectaride.com) or watch the video or read the HOW TO we have on our website that explains how this is done.



HOW TO: RESTORE A BACKUP

- The backup will now be restored and you will be taken directly to the 'Set Up Cloud' screen. Enter your credentials to connect the device and you'll be ready to go.



3:32 PM

[< Home](#) Set Up Cloud

**inspect
aride**

Enter your InspectARide Username and Password

Username

Password

Name this Device

Continue

Learn More